

MANISCOPIC


MT 1740
SLT & SLT ULTRA




- Maximum lifting height : 16.65 m
- Nominal capacity :
4000 kg at 500 mm
- Maximum forward reach : 12.35 m
- Torque convertor
- 4 wheel drive - 4 wheel steer
- Hydraulic stabilizers
- Frame levelling

 **MANITOU**

MT 1740 SLT/SLT ULTRA


 **Lift capacity**4000 kg
 at 500 mm from forks heels.
 Tipping load at maximum reach
 with stabilizers957 kg
 Tear out force with bucket
 as per ISO 83137000 daN


 **Lift height**16.65 m
Times : unladen / loaded (in s)
 Lifting15/16
 Lowering10/9
 Extension 1st and 2nd booms21.8/24.4
 Extension 3rd boom (with stabilisers only) ..10.4/11.5
 Retraction 1st and 2nd booms17.7/17.4
 Retraction 3rd boom (with stabilisers only)9.7/8.7
 Time unladen (in s)
 Crowd5.3
 Dump8.4


 **Tyres**
 440/80-24

 **Forks (mm)**
 Length1200
 Width x thickness125 x 50
 Maximum distance between forks1040
 Carriage rotation124°


 **Multidisc brakes - hydraulically assisted on both axles**

 **PERKINS Engine Turbo**
 Type1104C- 44 Turbo
 Capacity4 cylindres 4400 cm³
 Power (ISO/TR 14396) :
 at 2200 tr/mn100 HP/74.5 kw
 Maximum torque (ISO/TR 14396) ..412 Nm at 1400 r.p.m.
 Direct Injection
 Water Cooling

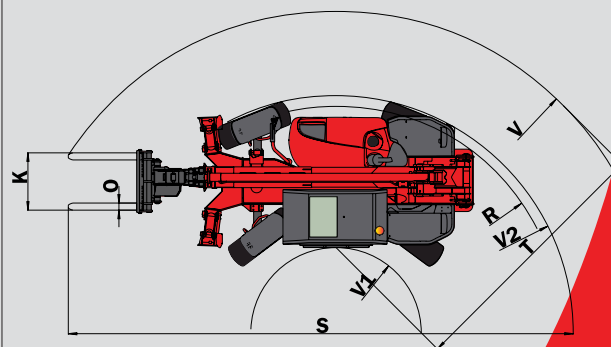
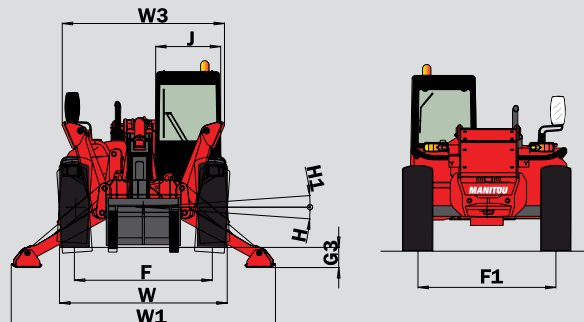
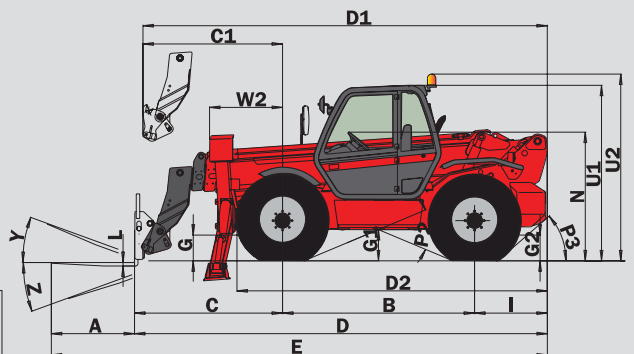
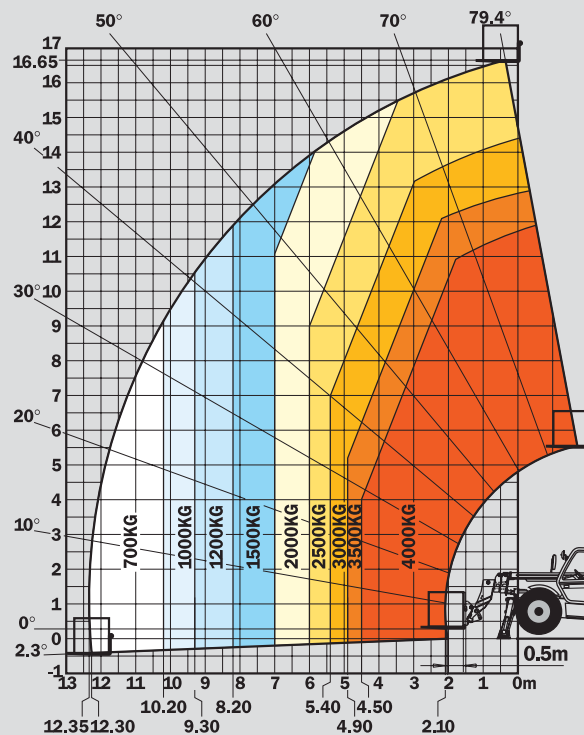
 **Transmission**Torque convertor
 Electro-hydraulic reversing shift
 4 gears forward and reverse
 Maximum travel speed25 km/h

 **Hydraulics**
 Gear type260 bars/196 l/mn
 Flow divider with priority to steering and brakes

 **Capacities**
 Cooling system18.5 l.
 Engine oil11 l.
 Hydraulic oil175 l.
 Transmission oil16 l.
 Fuel tank135 l.

 **Weight unladen (with forks)**11220 kg
Overall width2.42 m
Overall height2.60 m
Turning radius (outside wheels)4.17 m
Overall length5.98 m
Ground clearance0.48 m
Drawbar pull (unladen)9700 daN

Under
 EN 1459
 annexe B



| | |
|----|-------|
| A | 1200 |
| B | 2770 |
| C | 2160 |
| C1 | 2232 |
| D | 5980 |
| D1 | 6052 |
| D2 | 4435 |
| E | 7180 |
| F | 1990 |
| F1 | 1990 |
| G | 480 |
| G1 | 475 |
| G2 | 480 |
| G3 | 290 |
| H | 7 |
| H1 | 7° |
| I | 1050 |
| J | 950 |
| K | 1040 |
| L | θ |
| N | 1880 |
| O | 125 |
| P2 | 45,5° |
| P3 | 50° |
| R | 3950 |
| S | 8912 |
| T | 4239 |
| U1 | 2605 |
| U2 | 2785 |
| V | 5709 |
| V1 | 1470 |
| V2 | 4168 |
| W | 2425 |
| W1 | 3820 |
| W2 | 1050 |
| W3 | 2350 |
| Y | 12° |
| Z | 112° |

mm